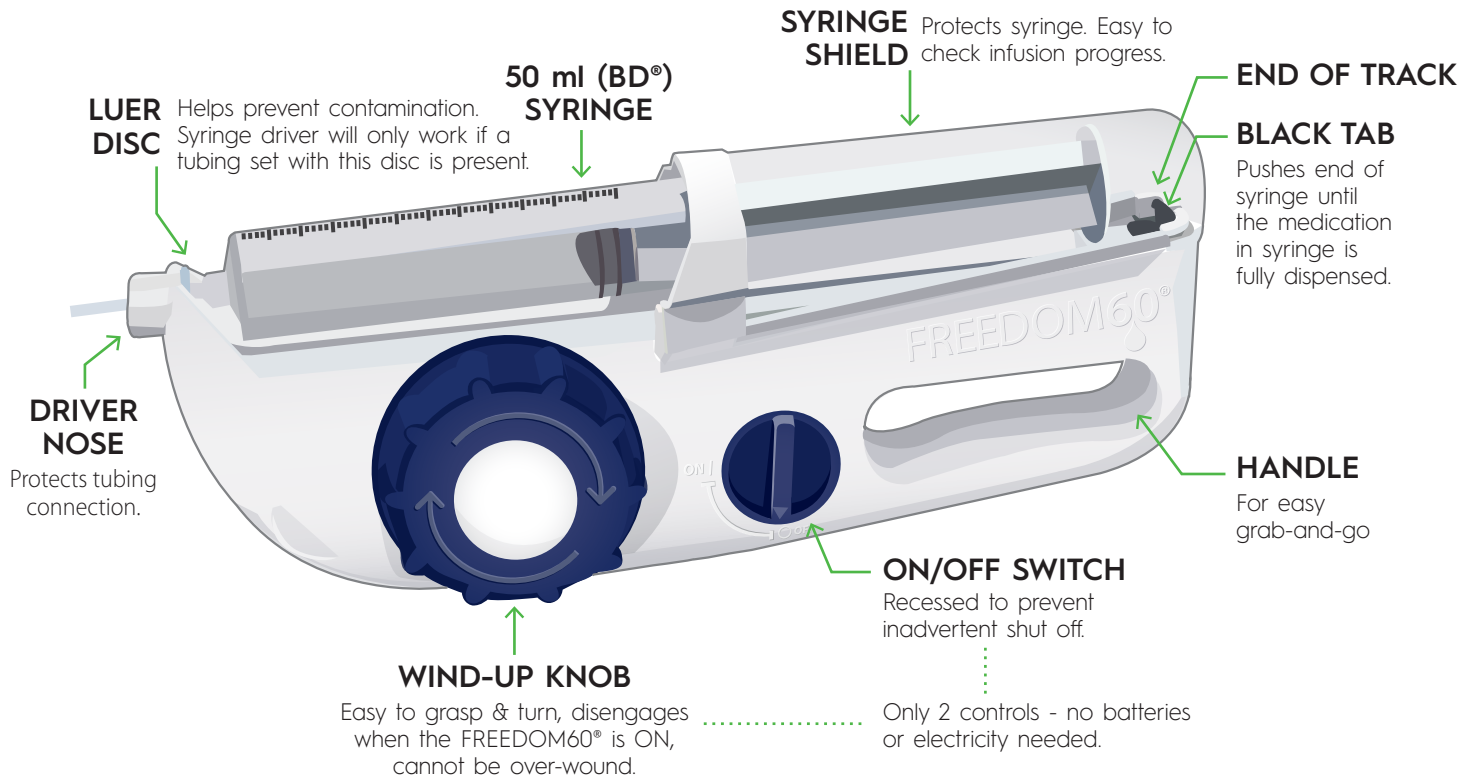


# FREEDOM60<sup>®</sup>

Syringe Infusion System

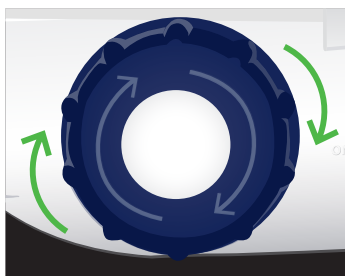


## Indications For Use:

The FREEDOM60<sup>®</sup> Syringe Infusion System is indicated for the infusion of prescribed liquid medicines.

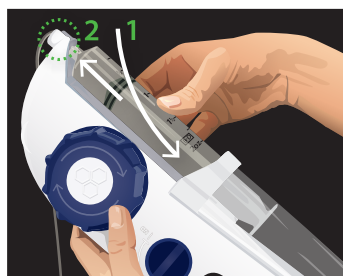
## Infusions made easy as 1, 2, 3...

### 1 Wind



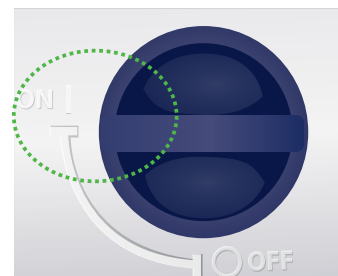
Wind knob until black tab is at end of its track.

### 2 Load



Load prepared syringe.

### 3 Go



Switch ON and go!

# FREEDOM60<sup>®</sup>

Syringe Infusion System

## Easy to Use:

- Only two operating knobs:
  - Large, ergonomic wind knob is easy to grasp and turn
  - Recessed ON/OFF switch
- Just 3 steps - wind, load and go
- Completely portable:
  - No batteries or electric needed
  - Travel pouch included for easy transport
- No alarms or product maintenance

## Integrated Safety:

- Maintains safe constant pressure
- Only KORU Freedom systems have DynEQ™ (Dynamic Equilibrium), which:
  - Automatically responds to increasing pressure (caused by tissue saturation) by slowing down the flow rate during delivery
- Holds full pressure after infusion is complete to prevent blood return or drug backflow
- Eliminates:
  - Concerns of a bolus
  - Overflow
  - Overdose or runaway infusion

## Quality, Rugged Design:

- Made in the USA with highest level of quality control for defect-free product
- Robust design made with molded ABS plastic housing
- No sensitive electric parts
- Reliable system, consistent infusions

## Versatile:

- Can be used for various administrations
- Precision tubing sets from F0.5-F2400

## Ordering Information

### Product Description:

FREEDOM60<sup>®</sup> Syringe Driver with Travel Pouch

Replacement Travel Pouch - black

Zebra Print Travel Pouch - pattern

### Item #:

F10050

F10090

F10080



## Technical Specs

### Syringe Driver:

Weight: 14 oz (0.4 kg)  
Length: 12" (304 mm)  
Width: 4.5" (114 mm)  
Height: 1.6" (41 mm)

### System:

Accuracy: +/- 15%  
Residual volume: <0.4 ml

### Syringe:

Reservoir volume: 50 ml  
(50 ml BD<sup>®</sup> syringes)

## Other Products:



### FreedomEdge<sup>®</sup> Syringe Infusion System

for smaller infusion doses, 20 ml and 30 ml syringes



### Precision Flow Rate Tubing™

for flow rates from F0.5 - F2400



### HiG-Flo Subcutaneous Safety Needle Sets™

available in 24G and 26G, 4 mm-14 mm lengths and 1-6 needle leg sets



### 24" Extension Tubing Set (FEXT)

for those who need a longer length